



# GAT MONTHLY MEMBERSHIP PROGRESS REPORT

Results as of: 10/31/2022

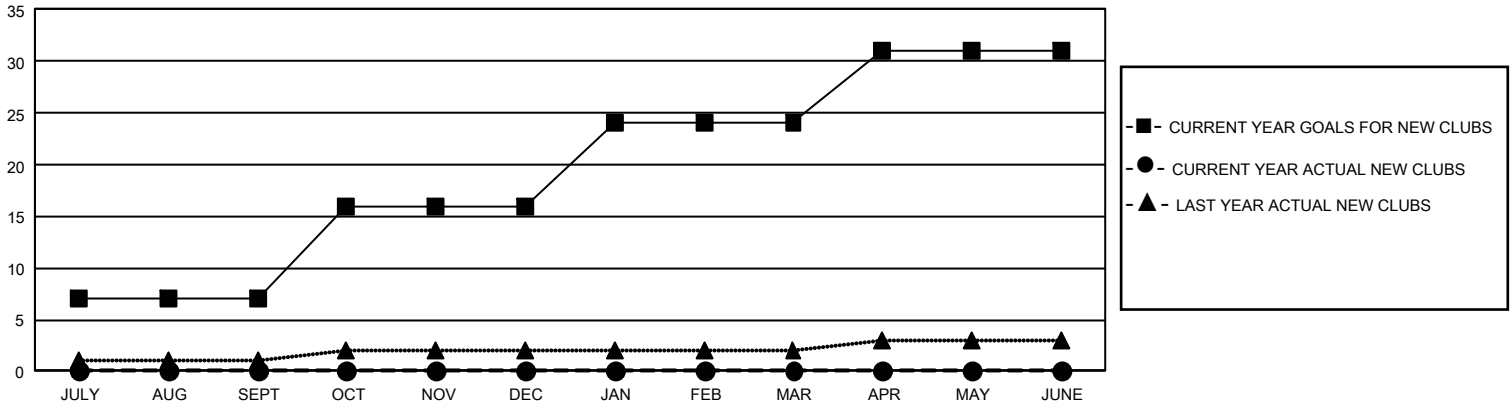
## GMT Constitutional Area 1, Group J

REPORT DOES NOT INCLUDE CLUBS IN UNDISTRICTED AREAS.

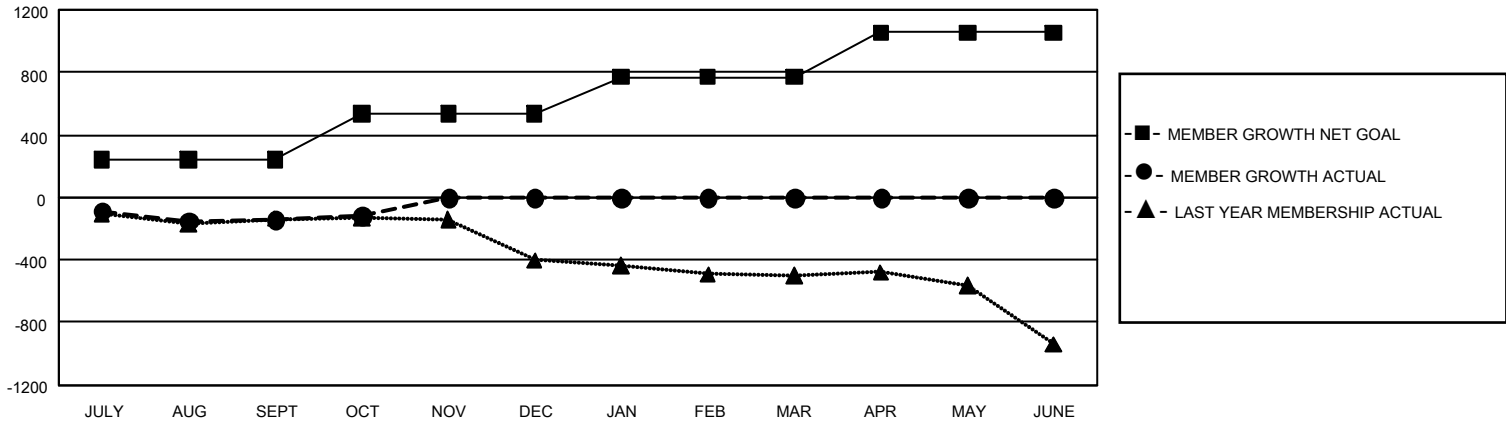
Clubs			
RESULTS FOR 2022-2023			
QUARTER	NEW CLUB GOAL	NEW CLUBS	DROPPED CLUBS
JULY/AUG/SEPT	21	0	5
OCT/NOV/DEC	27	0	1
JAN/FEB/MAR	24	0	0
APR/MAY/JUNE	21	0	0

Members			
RESULTS FOR 2022-2023			
QUARTER	MEMBER GROWTH NET GOAL	MEMBER GROWTH ACTUAL	DROPPED MEMBERS ACTUAL (including transfers)
JULY/AUG/SEPT	241	420	522
OCT/NOV/DEC	297	194	153
JAN/FEB/MAR	231	0	0
APR/MAY/JUNE	287	0	0

GOALS AND ACTUAL NEW CLUBS CUMULATIVE



GOALS AND ACTUAL MEMBERS CUMULATIVE



<b>DROPPED CLUBS: 6</b>	259 CLUBS OF 896 ADDED 1 OR MORE NEW MEMBERS	<b>GENDER DISTRIBUTION</b>	
		MALE 14,309 (69.79%) FEMALE 6,192 (30.20%) NON BINARY 1 (0.00%) PREFER NOT TO ANSWER 0 (0.00%)	
<b>DROPPED MEMBERS</b>		<a href="#">CLICK HERE FOR CUMULATIVE MEMBERSHIP DATA</a>	TOTAL FAMILY UNIT MEMBERS 4,002
DECEASED 111 CLUB CANCELLED 9 OTHER 557 <b>TOTAL 677</b>			FAMILY MEMBERS PAYING HALF DUES 2,040